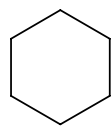
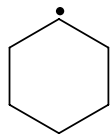


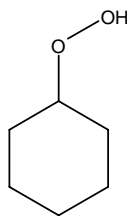
Species Glossary of Species Important at Low Temperature for CHX (Cyclohexane)



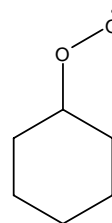
chx



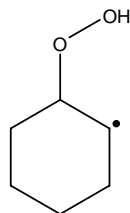
chxrad



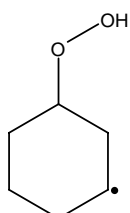
chxo2h



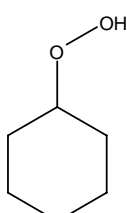
chxo2j



chx1q2j



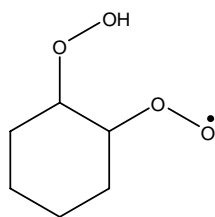
chx1q3j



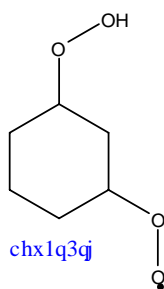
chx1q4j

where Q = -OOH
J = radical site

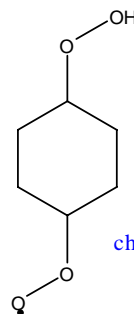
Colour highlights major species according to the Low Temperature Rxn Scheme
RH & R·
RO₂
·QOOH
O₂QOOH
Keto



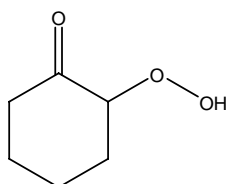
chx1q2qj



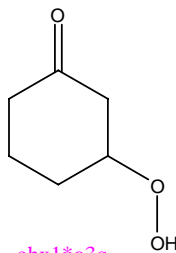
chx1q3qj



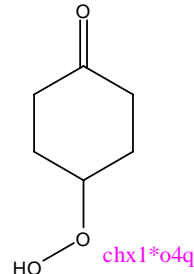
chx1q4qj



chx1*o2q



chx1*o3q



chx1*o4q

Naming Conventions

chx = cyclohexane structure

q = OOH structure

ene or n = C-C double bond

j = radical site

yoi j = oxygen containing ring connected on the i and j carbon

bt or but = n-butane structure

ol = alcohol group

hx, h, or hex = hexane structure

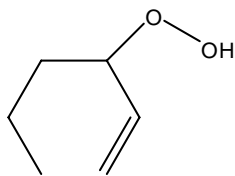
al = carbonyl group

* = double bond

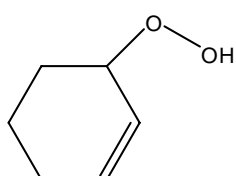
dial = di-aldehyde species specifically -C=O group

pro = propane structure

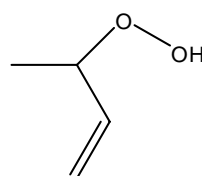
QOOH decomposition routes:
The structure and naming of new species formed via these channels



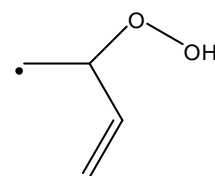
hex1en3q



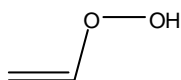
hx1en3q6j



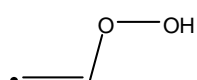
but1ene3q



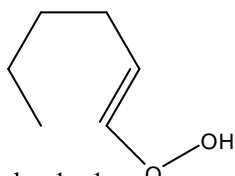
bt1en3q4j



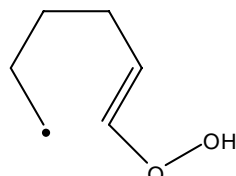
c2h3ooh



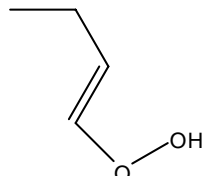
c2h2ooh



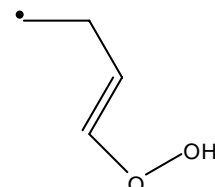
hex1en1q



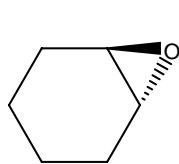
hx1en1q6j



but1ene1q

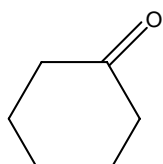


bt1en1q4j

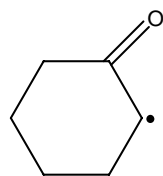


chxyo12

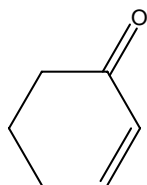
where y = additional
ring to chx



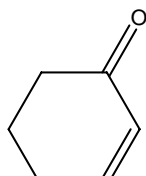
chx1*o



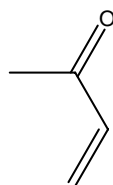
chx1*o2j



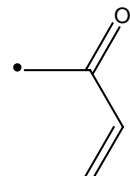
hx1en3*o



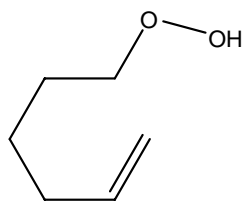
hx1n3*o6j



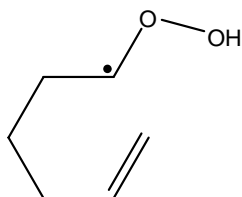
but1en3*o



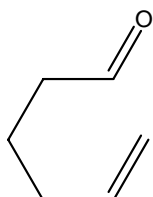
bt1n3*o4j



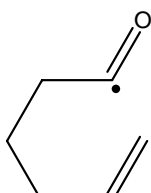
hex1en6q



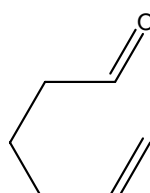
hx1en6qj



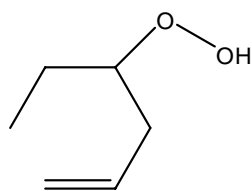
hex5enal



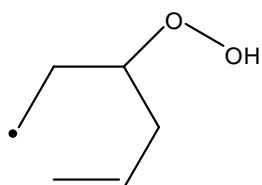
hx5enal1j



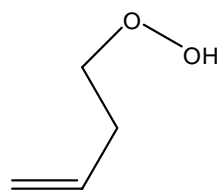
hx5enal4j



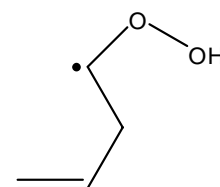
hex1en4q



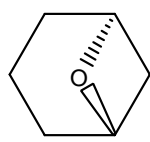
hx1en4qj



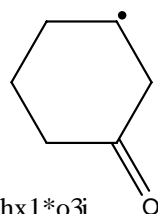
but1ene4q



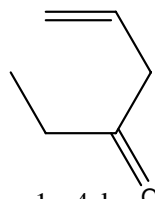
bt1en4qj



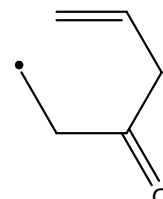
chxyo13



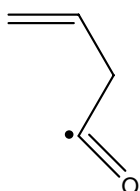
chx1*o3j



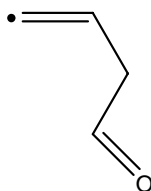
hex1en4al



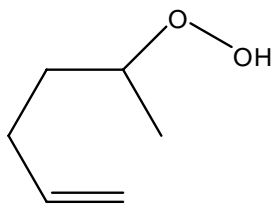
hxen4al6j



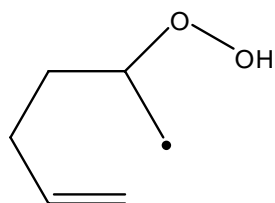
ac3h5c*o4



ac3h4cho1



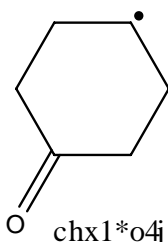
hex1en5q



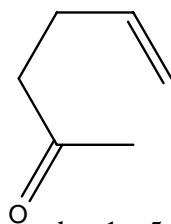
hx1en5q6j



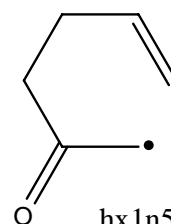
chxyo14



chx1*o4j

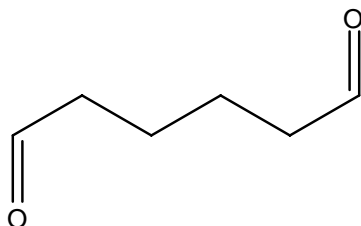


hex1en5al

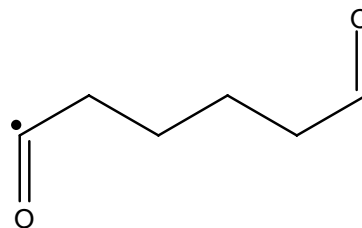


hx1n5al6j

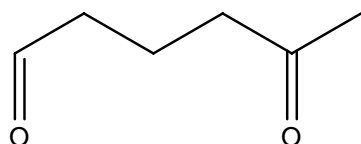
Decomposition of Ketohydroperoxides :
The structure and naming of new species formed via these channels



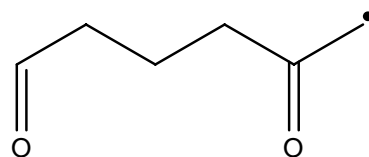
hex16dial



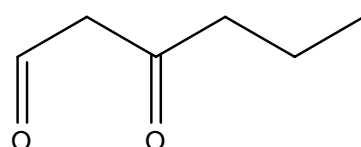
hx16al1j



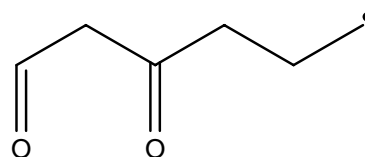
hex15dial



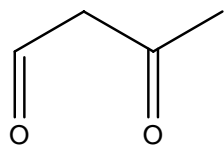
hx15al6j



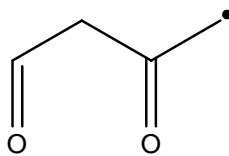
hex13dial



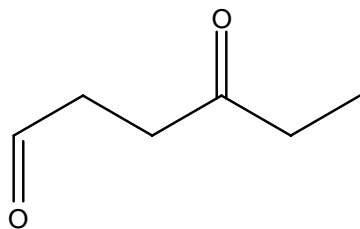
hx13al6j



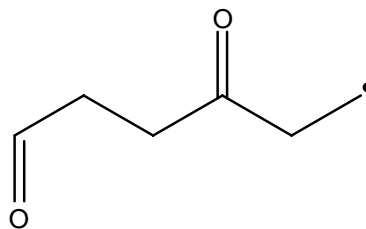
but13dial



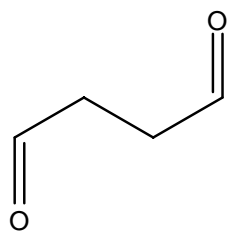
bt13al4j



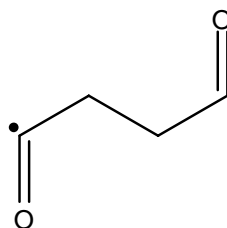
hex14dial



hx14al6j

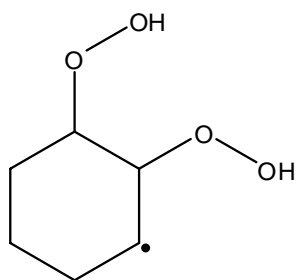


but14dial

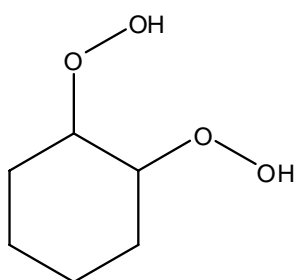


bt14al1j

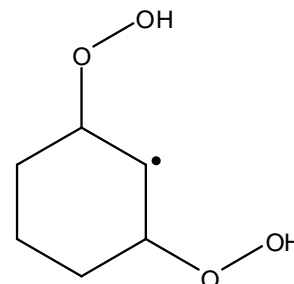
$\cdot O_2QOOH$ Alternatives:
Structure and naming of new species formed via this channel



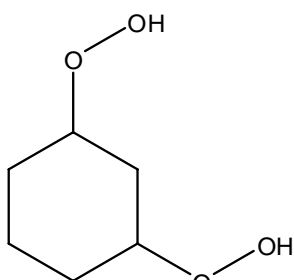
chx1q2q3j



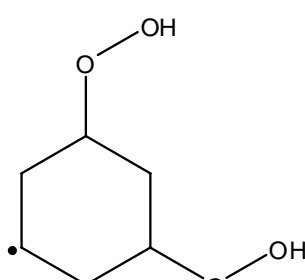
chx1q2q4j



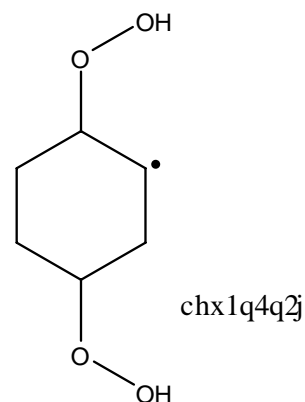
chx1q3q2j



chx1q3q4j

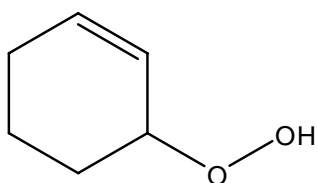


chx1q3q5j

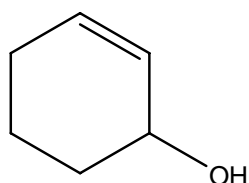


chx1q4q2j

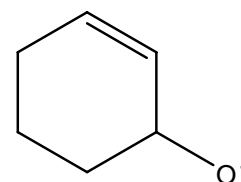
Decomposition of $\cdot O_2QOOH$ Alternatives:
Structure and naming of new species formed via these channels



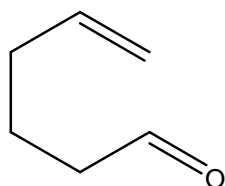
cyhx1en3q



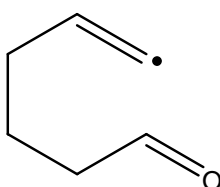
cyhx1n3ol



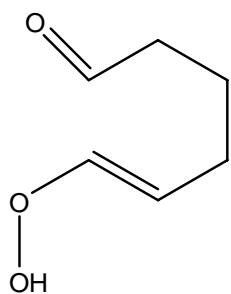
cyhx1n3oj



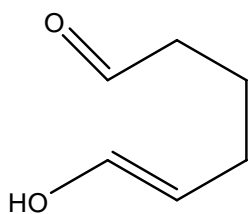
hex1en6al



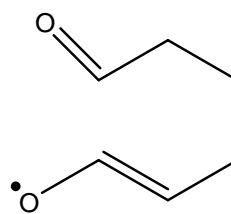
hxn6al1j



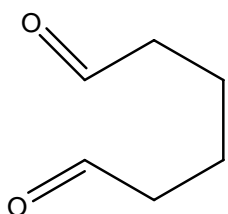
hex1n1q6al



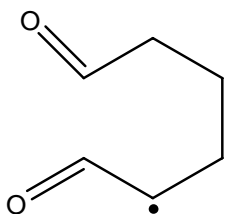
hex1nol6al



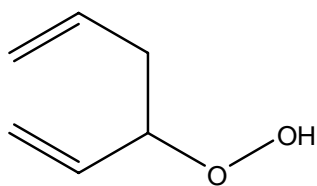
hex1noj6al



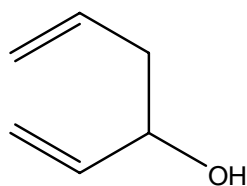
hex16dial
(duplicated here)



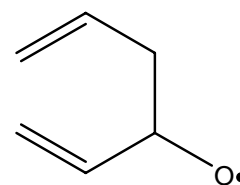
hex16al2j



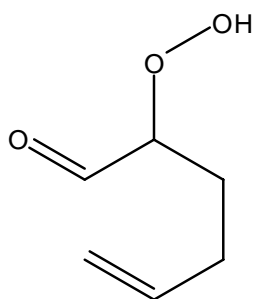
hex15en3q



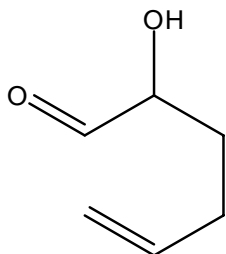
hex15en3ol



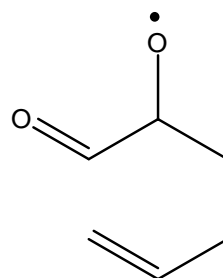
hex15en3oj



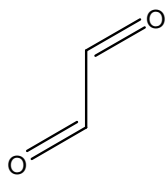
hex1n5q6al



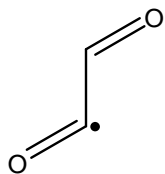
h1n5ol6al



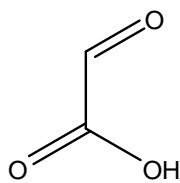
h1n5oj6al



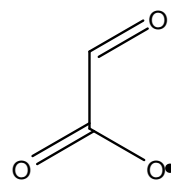
chocho



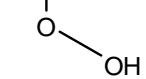
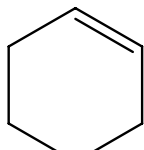
chocjo



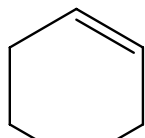
choco2h



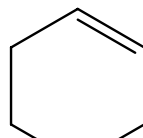
choco2j



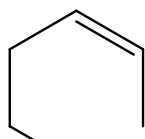
cyhx1en4q



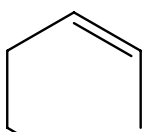
cyhx1n4ol



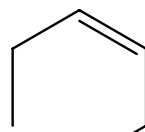
cyhx1n4oj



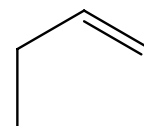
hex2en6al



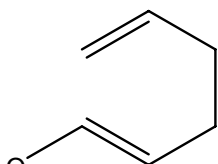
hx2n6al1j



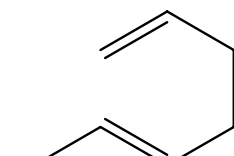
hex3en6al



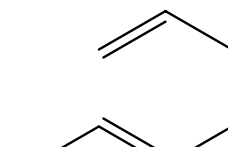
hx3n6al1j



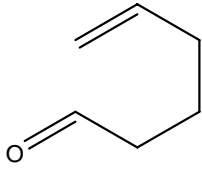
hex15en1q



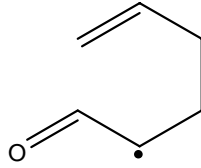
hx15en1ol



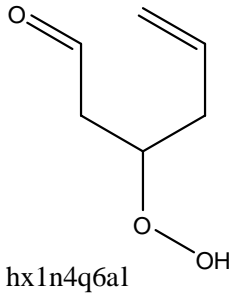
hx15en1oj



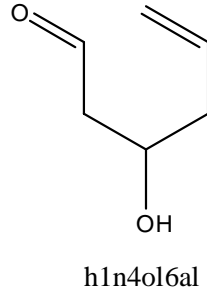
hex1en6al



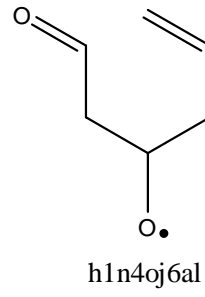
hx1n6al5j



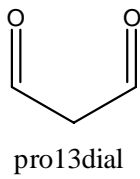
hx1n4q6al



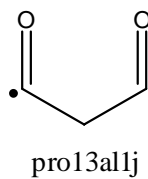
h1n4ol6al



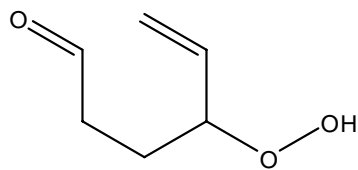
h1n4oj6al



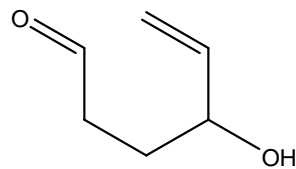
pro13dial



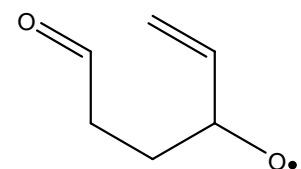
pro13al1j



hx1n3q6al



h1n3ol6al



h1n3oj6al

LLNL-MI-421375